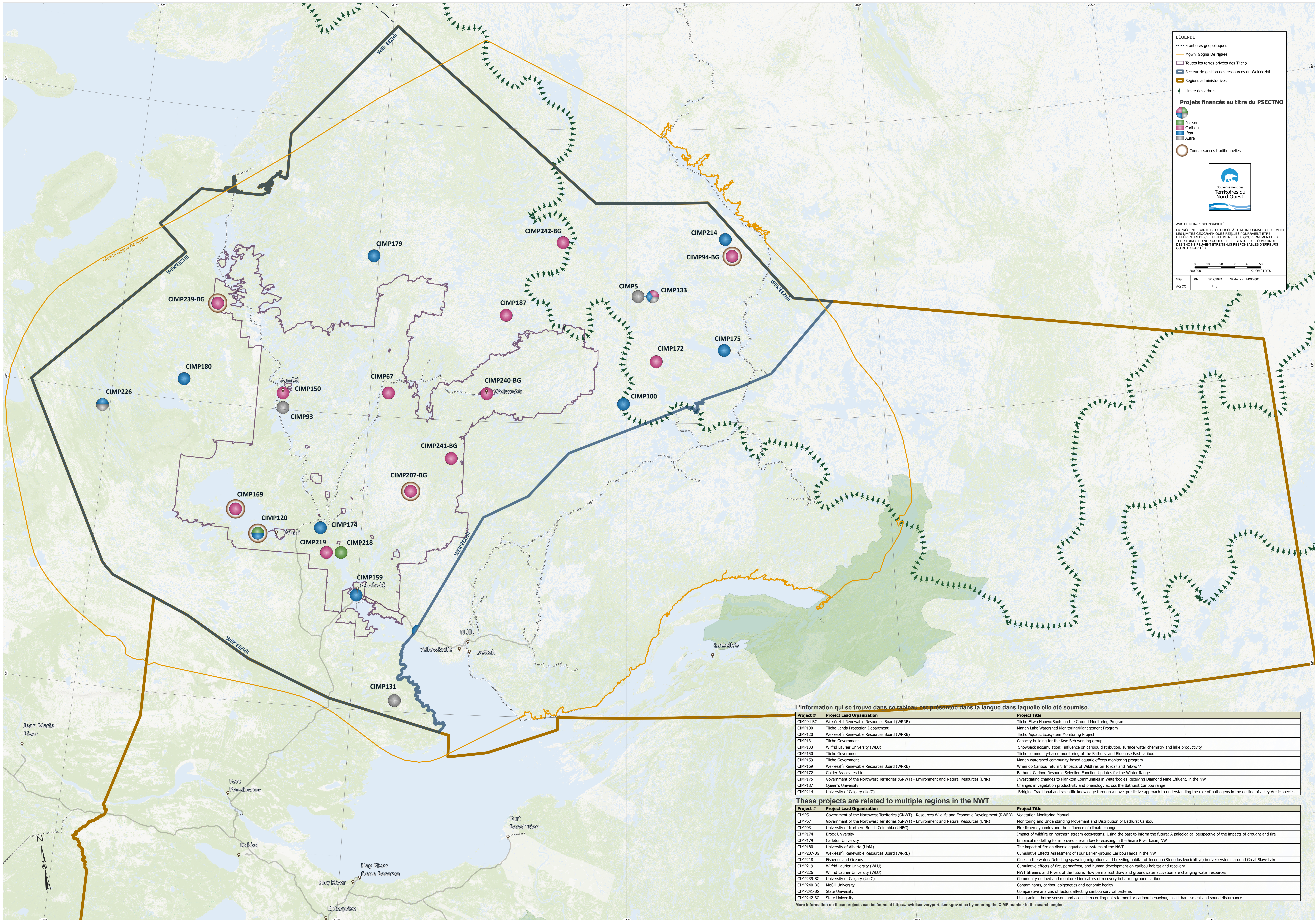


Projets financés au titre du PSECTNO de 2001 à 2025 dans le secteur de gestion du Wek'eezhii



LÉGENDE

- Frontières géopolitiques
- Mwáhi Gogha De Ngááh
- Toutes les terres privées des Tl'cho
- Secteur de gestion des ressources du Wek'eezhii
- Régions administratives
- Limite des arbres

Projets financés au titre du PSECTNO

- Poisson
- Caribou
- L'eau
- Autre
- Connaissances traditionnelles

Government of the Northwest Territories

AVIS DE NON-RESPONSABILITÉ
LA PRÉSENTE CARTE EST UTILISÉE À TITRE INFORMATIF SEULEMENT. LES LIMITES GÉOGRAPHIQUES RÉELLES POURRAIENT ÊTRE DIFFÉRENTES DE CELLES ILLUSTRÉES. LE GOUVERNEMENT DES TERRITOIRES DU NORD-OUEST ET LE CENTRE DE GÉOMATIQUE DES TNO NE PEUVENT ÊTRE TENUS RESPONSABLES D'ÉVÉNEMENTS OU DE DISPARITÉS.

0 10 20 30 40 50
KILOMÈTRES

SIG: KN 5/17/2024 N° de doc.: MND-801
AQ.CQ

L'information qui se trouve dans ce tableau est présentée dans la langue dans laquelle elle a été soumise.

Project #	Project Lead Organization	Project Title
CIMP94-BG	Wek'eezhii Renewable Resources Board (WRRB)	Tl'cho Et'wo Nwawo-Boots on the Ground Monitoring Program
CIMP100	Tl'cho Lands Protection Department	Marian Lake Watershed Monitoring/Management Program
CIMP120	Wek'eezhii Renewable Resources Board (WRRB)	Tl'cho Aquatic Ecosystem Monitoring Project
CIMP131	Tl'cho Government	Capacity building for the Kwe Beh working group
CIMP133	Wilfrid Laurier University (WLU)	Snowpack accumulation: influence on caribou distribution, surface water chemistry and lake productivity
CIMP150	Tl'cho Government	Tl'cho community-based monitoring of the Bathurst and Bluenose East caribou
CIMP159	Tl'cho Government	Marian watershed community-based aquatic effects monitoring program
CIMP169	Wek'eezhii Renewable Resources Board (WRRB)	When do Caribou return? Impacts of Wildfires on Tl'cho? and 'beawo'?
CIMP172	Golder Associates Ltd.	Bathurst Caribou Resource Selection Function Updates for the Winter Range
CIMP175	Government of the Northwest Territories (GNWT) - Environment and Natural Resources (ENR)	Investigating changes to Plankton Communities in Waterbodies Receiving Diamond Mine Effluent, in the NWT
CIMP187	Queen's University	Changes in vegetation productivity and phenology across the Bathurst Caribou range
CIMP214	University of Calgary (UoC)	Bridging Traditional and scientific knowledge through a novel predictive approach to understanding the role of pathogens in the decline of a key Arctic species.

These projects are related to multiple regions in the NWT

Project #	Project Lead Organization	Project Title
CIMP5	Government of the Northwest Territories (GNWT) - Resources Wildlife and Economic Development (RWED)	Vegetation Monitoring Manual
CIMP67	Government of the Northwest Territories (GNWT) - Environment and Natural Resources (ENR)	Monitoring and Understanding Movement and Distribution of Bathurst Caribou
CIMP93	University of Northern British Columbia (UNBC)	Fire-lichen dynamics and the influence of climate change
CIMP174	Brock University	Impact of wildfire on northern stream ecosystems; Using the past to inform the future: A paleological perspective of the impacts of drought and fire
CIMP179	Carleton University	Empirical modelling for improved streamflow forecasting in the Snare River basin, NWT
CIMP180	University of Alberta (UoA)	The impact of fire on diverse aquatic ecosystems of the NWT
CIMP207-BG	Wek'eezhii Renewable Resources Board (WRRB)	Cumulative Effects Assessment of Four Barren-ground Caribou Herds in the NWT
CIMP218	Fisheries and Oceans	Clues in the water: Detecting spawning migrations and breeding habitat of Inconnu (Stenodus leucichthys) in river systems around Great Slave Lake
CIMP219	Wilfrid Laurier University (WLU)	Cumulative effects of fire, permafrost, and human development on caribou habitat and recovery
CIMP226	Wilfrid Laurier University (WLU)	NWT Streams and Rivers of the future: How permafrost thaw and groundwater activation are changing water resources
CIMP239-BG	University of Calgary (UoC)	Community-defined and monitored indicators of recovery in barren-ground caribou
CIMP240-BG	McGill University	Contaminants, caribou epigenetics and genomic health
CIMP241-BG	State University	Comparative analysis of factors affecting caribou survival patterns
CIMP242-BG	State University	Using animal-borne sensors and acoustic recording units to monitor caribou behaviour, insect harassment and sound disturbance

More information on these projects can be found at <https://nwrtdiscoveryportal.enr.gov.nt.ca> by entering the CIMP number in the search engine.